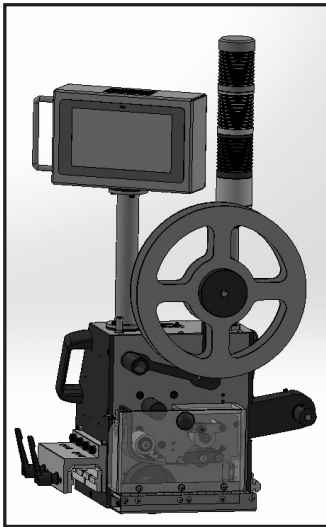




Postmatic Inline Stamping System



New 8000 ULTRA Stamp Affixer

10,000 stamp coil capacity. Dual stamping capabilities include stop and go, dual stamping, and high production stamping.

CONTACT: For details call (763)-784-6046, visit www.postmatic.net or email: info@postmatic.net.

stamping system with multi-channel intelligent features. Reduce time of changing over coils and slowing down production by enabling one of the 3 features that are embedded in the new Dual Stamping System. Great for up to 6×9 or 10×13 size pieces and configured for Left to Right flow.

COMING SOON - New 8000 ULTRA Stamp Affixer: Our NEW ultra high-speed stamp affixer is designed to mount on any base with speeds up to 40,000 pieces an hour. The 8000 ultra stamp affixer will keep up with any high speed inserter. It has an easy to control interface and the ability to channel multiple stampers inline. It allows for quick and easy loading and unloading with large 3,000 and

Sign-up for
memo-to-mailers
 for the latest mail industry news at
www.mailomg.com

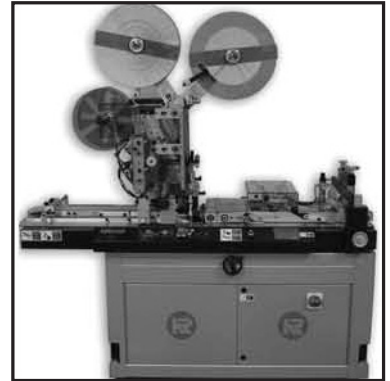
§ Kirk-Rudy, Inc.

CATEGORY: Tabbing Systems

PRODUCT: KR540, KR440, KR545 & KR565 Tabbing Systems

COMPANY: Kirk-Rudy, Inc., 125 Lorraine Parkway, Woodstock, GA 30188. Key Contact: info@kirkrudy.com. Phone: 770-427-4203.

KR545D TABBER: Applies tabs to 3 sides in a single pass to meet the new USPS specifications for self-mailers and booklet tabbing regulations. The KR545D handles large 18" diameter rolls and runs all major types of tabs as well as pressure-sensitive stamps and labels of various shapes and sizes. Multiple tabs or labels can be applied in a single pass. The KR545D's innovative dual web design allows inline operation with standard addressing and binding systems. Use with the KR565 Roll Splice Unit for uninterrupted continuous tabbing and labeling.



KR545D Tabber

KR545T TABBER: Meet the USPS specification for self-mailers and booklet tabbing with Kirk-Rudy's proven all in one tabbing innovation the KR545T. The only Tabber that applies Tabs to all 3 sides in a single pass. The KR545T handles large 18" diameter rolls and runs all major types of tabs as well as pressure sensitive stamps and labels of various shapes and sizes. Multiple tabs or labels can be applied in a single pass. The KR545T's innovative triple web design allows inline operation with standard addressing and binding systems. Use with the KR565 Roll Splice Unit for uninterrupted continuous tabbing and labeling.



KR545T Tabber

KR 540 TABMASTER: The KR 540 makes tabbing of paper products faster and easier than ever. A straight forward operator interface simplifies operator training and setup while industry standard motors and controls make the KR 540 simple to operate and economical to maintain. All major types of tabs as well as pressure-sensitive stamps and labels of various shapes and sizes can be placed on a wide variety of products. Right or left edge tabbing, bump turn attachments, wide and fan-folded label kits along with a folder interface conveyor option make the KR 540 a flexible system.



Kirk-Rudy KR540 Tabber

KR 440 MINI TABBER: The KR 440 is Kirk-Rudy's newest and most affordable tabbing system yet. Priced thousands less than comparable systems, the KR 440 utilizes many of the same features that made the KR 540 a bestseller. Key features like side register belts, side-to-side top plate adjustment and automatic tab sensor setup keeps the tabbing process con-

Tabbing Systems



KR440 Mini Tabber

Kirk-Rudy tabbers. The continuous feed dual unwind acts as a stand-alone standard loose-loop powered unwind unit. When the supply roll unwinds to a certain level, a sensor activates a warning light and signals the drive to feed the remaining labels into a holding bin. The second roll of labels is then spliced to the end of the web as the labels in the bin are consumed.

CONTACT: For more information, call 770-427-4203 or email info@kirkrudy.com.

sistent and reliable. Also, the KR 440's operator interface utilizes all the same user-friendly programs found on the KR 540 that simplify operator training and setup. The KR 440 handles large 16" diameter rolls and runs all major types of tabs as well as pressure-sensitive stamps and labels of various shapes and sizes. Multiple tabs or labels can be applied in a single pass. The KR 440 runs in line with most standard addressing systems.

KR 565 LABEL SPLICING UNIT: Designed to provide nonstop, uninterrupted labeling when used with



KR565 Splicing Unit

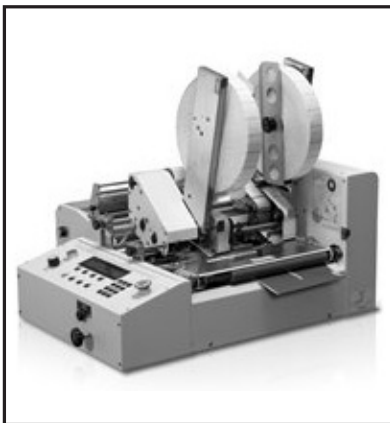
§ Pitney Bowes Inc.

CATEGORY: Tabbing Systems

PRODUCT: W360 Tabber

COMPANY: Pitney Bowes Inc., 3001 Summer Street, Stamford, CT 06926-0700. Contact: PitneyBowes.com

W360 MULTIFUNCTION TABBER SYSTEM: The W360 Multifunction Tabber System has some of the most advanced features for a tabletop model and it has the capability to meet all the latest USPS regulations in order to benefit from



Pitney Bowes W360 Tabber System

automated postal discounts. The dual head tabber provides several tabbing applications along with a stamp affixing all in one simple step. It's great for tabbing newsletters, double post-cards, letter size booklets, tri-fold brochures and other open ended self-mailers. This system can apply up to 3 USPS postage stamps on a self-mailer, applies round tabs from 3/4" to 1 1/2" to the top and side of a mail piece simultaneously and on opposite side and handles a variety of paper stocks like coated, newsletter, recycled and card. The digital control panel has the ability to program and save up to four jobs. The system applies clear, translucent and paper tabs, processes media from 5"Wx 3 1/2" L to 11"Wx 15 L", up to 1/4" thick and includes a standard feeder with holds up to 12" of folded material in a single load.

CONTACT: For more about Pitney Bowes, visit PitneyBowes.com.

Tipping Systems



Kirk-Rudy KR497T Servo Attaching System

§ Kirk-Rudy, Inc.

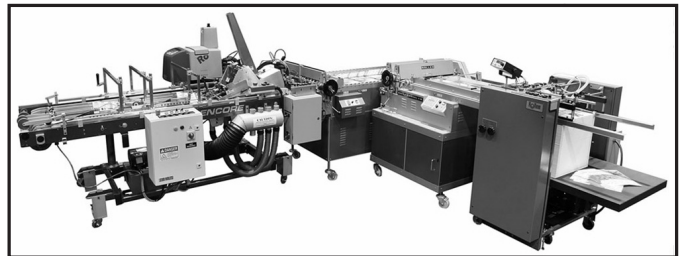
CATEGORY: Tipping Systems

PRODUCT: KR497T Servo Attaching System

COMPANY: Kirk-Rudy, Inc. 125 Lorraine Parkway, Woodstock, GA 30188. Email: info@kirkrudy.com. Phone: 770-427-4203.

KR497T SERVO ATTACHING SYSTEM: Engineered to accurately attach cards and other items to carriers, this system is designed to be flexible, handling a wide variety of products and jobs. Run plastic cards, magnets, as well as a large variety of folded paper products and apply multiple pieces onto a single carrier. The high-speed servo feeder runs at speeds up to 44 feet per minute. Like all Kirk-Rudy systems the KR497T is modular in design and can be added to existing lines.

CONTACT: For more information, call 770-427-4203 or email info@kirkrudy.com.



Rollem Mailstream

§ Rollem International

CATEGORY: Tipping Systems

PRODUCT: Mailstream Direct Mail Finishing System

COMPANY: Rollem International, 1650 S Lewis St., Anaheim, CA 92805-6413. Phone: 800-272-4381. Web: www.rollemusa.com/mail.

MAILSTREAM: Print, finish, and mail 10-in-one. Mailstream, a new direct mail finishing system, converts press sheets to finished mail products while maintaining zip code order. Apply 10 processes in one operation including hot, cold and fugitive glue; tear-off coupons; tip-on cards; trimming, slitting, scoring, pattern-perforations, and scratch-off labels. Mail integrity is maintained creating folded, glued products ready for delivery to mail bins. Glue closures meet USPS requirements and eliminate need for wafer seals. In-line and near-Line configurations are available.

CONTACT: For more information, call 800-272-4381 or click www.rollemusa.com.