



Two-Up Trifold Mailer

for wafer seals. In-line and near-Line configurations available.

CONTACT: For more information, call 800-272-4381 or click www.rollemusa.com/mail.

§ BOWE SYSTEC North America Inc.

CATEGORY: Inserter Feeders/Accessories

PRODUCT: A Line of Camera Solutions & Software

COMPANY: BOWE SYSTEC North America Inc., 8480 Honeycutt Rd, Ste 200, Raleigh, NC 27615-2260, www.bowesystecinc.com.

TOPCAM CUBE: The topSenso product family topCam offers premium camera solutions for virtually any application. In the mailroom, in the pharmaceutical, food or cosmetics industries – this area scan camera is an economical solution for nearly every production procedure operated and monitored using codes. The topCam Cube-series offers a compact design and comes with the finest high-end technology, available in three resolutions. From the high-density version with reading rates of up to 100 scans per second to the low-density solution for larger scan areas, the topCam Cube family offers the perfect camera specifications for customized solutions and applications. topCam Cube enables secure code identification and full documentation at high speeds with up to 100 readings per second and supports all standard codes (1D bar-code, 2D code, OMR, pharmaceutical code), plain writing, OCR/OCV, as well as addresses and labels. It has a high depth of field (+/- 20 mm) and a high resolution mega chip sensor technology. topCam Cube provides flexible solutions with high, standard and low density versions and module sizes from 0.15 mm.



topCam Cube

ucts while maintaining zip code order. Apply 10 processes in one operation including hot, cold and fugitive glue; tear-off coupons; tip-on cards; trimming, slitting, scoring, pattern-perforations, and scratch-off labels. Mail integrity is maintained creating folded, glued products ready for delivery to mail bins. Glue closures meet USPS requirements and eliminate the need

ucts while maintaining zip code order. Apply 10 processes in one operation including hot, cold and fugitive glue; tear-off coupons; tip-on cards; trimming, slitting, scoring, pattern-perforations, and scratch-off labels. Mail integrity is maintained creating folded, glued products ready for delivery to mail bins. Glue closures meet USPS requirements and eliminate the need

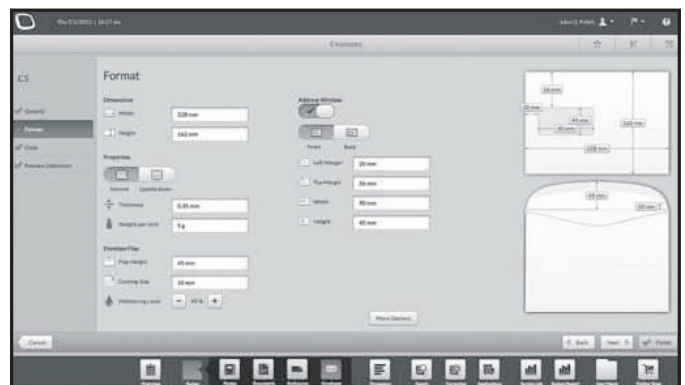
TOPCAM EAGLE: The topSenso product family topCam offers premium camera solutions for all kinds of applications. Areas can cameras are typically used in modern printing and mail processing centers, as well as in the pharmaceutical, food and cosmetics industries. They are in high demand wherever high definition image capturing at high speed and precision is required. Products in the topCam Eagle-series come with a separate optical head for use in the most hard-to-reach areas. From the high-density version with scan rates of up to 70 scans per second to the low-density solution for larger scan areas, the topCam Eagle product family always offers the perfect camera solution. All standard codes are supported (1D bar-code, 2Dcode, OMR, pharmaceutical code), as well as plain writing, OCR/OCV, addresses and labels. TopCam Eagle provides a flexible solutions with high, standard and low density versions and module sizes from 0.15 mm and comes with a high depth of field (+/- 20 mm) and a high resolution mega chip sensor technology. Changeover times can be reduced and productivity increased thanks to a quick set-up via a simple user interface.



topCam Eagle

ORBITER: In this “Age of Smartphones” we have become used to easily operable and clearly laid out apps. For exactly that reason BOWE SYSTEC has conceived a solution making the advantages of modern software available in an industrial environment — Orbiter. To an unprecedented degree Orbiter makes all individual programs (apps) easily accessible which are involved in the workflow of the complete mailroom. Orbiter offers all apps in a marketplace not restricted to BOWE SYSTEC apps but also containing software provided by partner companies: Orbiter Shop. Whatever is needed for the workflow is chosen there and made available for use. Structure and layout of the app icons in the navigation bar can be fully customized. This smart navigation solution allows the arrangement in any order or structure making complex things easy and comprehensible. Best of all: Orbiter is free of charge. Orbiter is a state-of-the-art navigation tool for organizing and structuring the whole workflow in the mailroom. Customers decide for themselves what the structure should look like. Orbiter makes the navigation of all mailroom apps possible – from pre-production and order management to machine control. This finally ends the change from one program to the next from different manufacturers, which is typical in today’s environment. Orbiter Shop is the marketplace where all apps are available and presented grouped into categories. Customers can individually combine apps according to their workflow. The Orbiter Shop includes BOWE SYSTEC

ucts while maintaining zip code order. Apply 10 processes in one operation including hot, cold and fugitive glue; tear-off coupons; tip-on cards; trimming, slitting, scoring, pattern-perforations, and scratch-off labels. Mail integrity is maintained creating folded, glued products ready for delivery to mail bins. Glue closures meet USPS requirements and eliminate the need



BOWE Cockpit Recipe

Your mail industry authority is just a click away.
www.mailomg.com

Inserter Feeders/Accessories

apps for control and management of inserting, card logistics and mailing, as well as sorting systems and apps related to the higher-level management of job preparation and processing.

BOWE COCKPIT: BOWE Cockpit contains apps required for installation, control and monitoring of an inserting system. The basic configuration of BOWE Cockpit consists of System Operation, Recipe for simple job creation as well as Report for creating order driven reports. Further options are continuous item tracking and Computerized Weighing/Computerized Optimizing (CW/CO) which calculates the weight of the mail piece and makes this data available for post-processing, such as franking or sorting. A completely new user interface as well as the graphically supported navigation of BOWE Cockpit ensure intuitive and simple system operation via state-of-the-art touch screens. The system guides the user through order processing: For each situation, only currently useful control elements are activated and logical processing steps are highlighted in color. A virtually text-free user interface ensures user friendliness. An interactive help function assists in manual set-ups or troubleshooting. The app Recipe supports the user in describing the characteristics of the material to be processed and prepares the machine for processing. Detailed knowledge of the system is not required for job programming. The material description can also be created centrally and once created recipes can be transferred to other machines without difficulties. BOWE Cockpit Report offers multiple reporting opportunities on a system level. This is a crucial advantage when new conditions require action or for advanced planning of future processes. Precise and specific production and shift reports assist in maximum utilization of the system capacity and support the analysis of completed jobs. As an additional benefit, BOWE Cockpit Report is easily extendible by additional reporting apps from the BOWE One area. BOWE Cockpit Item Tracking records document processing in detail. Every document is monitored during the whole process. Item Database performs a comparison of a target list in a common format against what was actually processed. This guarantees the accuracy and completeness of the whole production process. Reprint data is generated automatically at the end of a job.

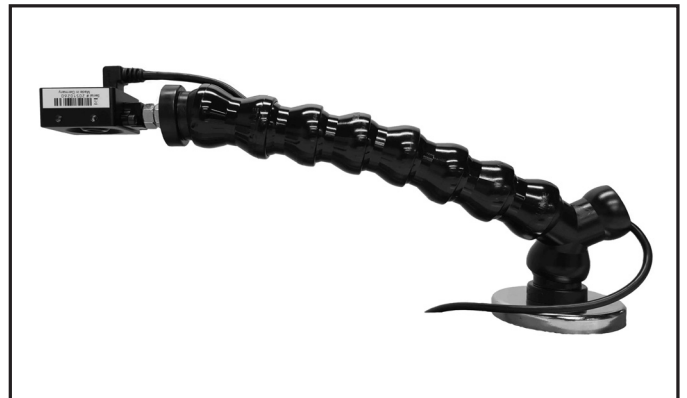


BOWE One

BOWE ONE: BOWE One offers a multitude of apps with central, cross-system functions from four basic modules. Output Management reliably prepares ready-for-print data streams, Production Management monitors the complete production process, Item Management ensures continuous item tracking and Order Management takes care of clear job management. BOWE One supplies the answer to all requirements of an Automated Document Factory (ADF). BOWE One delivers exact real-time data, database controlled production and guarantees highest quality and integrity. The optimal planning of the

workflow additionally enables the ideal resource utilization and maximum productivity. Output Management can prepare, modify and optimize data ready for printing across systems and offers all possibilities for centralized management and structuring. BOWE One Production Management supplies accurate real-time data of the complete production process — from data preparation up to mailing. This allows detailed monitoring and analysis of all production orders and resources. The comprehensive system overview, precise job analysis, exact operation data and optimum production preview increase planning reliability and productivity in the mailroom. Shorter reaction times through continuous information flow enable on-schedule production. Ensuring integrity and producing mail pieces with the correct content are essential signs of quality in the mailroom. BOWE One Item Management comprises the heart of a professional Automated Document Factory (ADF) and provides closed loop processing. A job in the mailroom is split into several individual jobs across different systems. To date, the processing of individual jobs could only be monitored separately, but now BOWE One Order Management makes it possible to track jobs as well as the initial overall job.

CONTACT: For more information, contact BOWE SYSTEC North America online at www.bowe.com/systec/en.



USB camera used in Clear Image Technologies Picture Perfect

§ Clear Image Technologies

CATEGORY: Inserter Feeders/Accessories

PRODUCT: Picture Perfect Match System

COMPANY: Clear Image Technologies, 94 Pebblebrook Lane, St. Louis, MO 63146. Contact: Larry Miyasaka. Phone: 314-853-5867.

DESCRIPTION: Picture Perfect is one of the least expensive camera matching systems available today. Designed as a low-cost alternative to many automatic document vision systems, it's well suited for the customer that demands the most personalized look.

FEATURES: Extremely easy to setup. No cams to adjust — timing is done on the monitor. Simply press one button and the camera position and timing are set. The timing of each camera can be individually adjusted and can be readjusted while the machine is running. See all the cameras live at the same time and adjust brightness, contrast, etc. individually. The Picture Perfect Match System is so easy to use. A matched image is always on the screen; no waiting for the last image to ensure the match is still correct. The operator sees clear images that have adjustments for each camera for brightness, contrast, sharpness, saturation, hue and more. View a history of the last 10 images to locate a mismatch. Cameras also can zoom in to get a larger image. The operator has the op-