

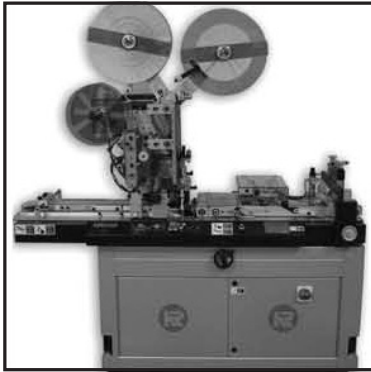
§ Kirk-Rudy, Inc.

CATEGORY: Tabbing Systems

PRODUCT: KR540, KR440, KR545 & KR565 Tabbing Systems

COMPANY: Kirk-Rudy, Inc., 125 Lorraine Parkway, Woodstock, GA 30188. Key Contact: info@kirkrudy.com. Phone: 770-427-4203.

KR545D TABBER: Applies tabs to 3 sides in a single pass to meet the new USPS specifications for self-mailers and booklet tabbing regulations. The KR545D handles large 18" diameter rolls and runs all major types of tabs as well as pressure-sensitive stamps and labels of various shapes and sizes. Multiple tabs or labels can be applied in a single pass. The KR545D's innovative dual web design allows inline operation with standard addressing and binding systems. Use with the KR565 Roll Splice Unit for uninterrupted continuous tabbing and labeling.



KR545D Tabber

KR545T TABBER: Meet the USPS specification for self-mailers and booklet tabbing with Kirk-Rudy's proven all in one tabbing innovation the KR545T. The only Tabber that applies Tabs to all 3 sides in a single pass. The KR545T handles large 18" diameter rolls and runs all major types of tabs as well as pressure sensitive stamps and labels of various shapes and sizes. Multiple tabs or labels can be applied in a single pass. The KR545T's innovative triple web design allows inline operation with standard addressing and binding systems. Use with the KR565 Roll Splice Unit for uninterrupted continuous tabbing and labeling.



KR545T Tabber

KR 540 TABMASTER: The KR 540 makes tabbing of paper products faster and easier than ever. A straight forward operator interface simplifies operator training and setup while industry standard motors and controls make the KR 540 simple to operate and economical to maintain. All major types of tabs as well as pressure-sensitive stamps and labels of various shapes and sizes can be placed on a wide variety of products. Right or left edge tabbing, bump turn attachments, wide and fan-folded label kits along with a folder interface conveyor option make the KR 540 a flexible system.



Kirk-Rudy KR540 Tabber

KR 440 MINI TABBER: The KR 440 is Kirk-Rudy's newest and most affordable tabbing system yet. Priced thousands less than comparable systems, the KR 440 utilizes many of the same features that made the KR 540 a bestseller. Key features like side register belts, side-to-side top plate adjustment and automatic tab sensor setup keeps the tabbing process con-



KR440 Mini Tabber

sistent and reliable. Also, the KR 440's operator interface utilizes all the same user-friendly programs found on the KR 540 that simplify operator training and setup. The KR 440 handles large 16" diameter rolls and runs all major types of tabs as well as pressure-sensitive stamps and labels of various shapes and sizes. Multiple tabs or labels can be applied in a single pass. The KR 440 runs in line with most standard addressing systems.

CONTACT: For more information, call 770-427-4203 or email info@kirkrudy.com.

KR 565 LABEL SPLICING UNIT: Designed to provide nonstop, uninterrupted labeling when used with



KR565 Splicing Unit

§ Pitney Bowes Inc.

CATEGORY: Tabbing Systems

PRODUCT: W360 Tabber

COMPANY: Pitney Bowes Inc., 3001 Summer Street, Stamford, CT 06926-0700. Tele: 877-682-7687. Web: PitneyBowes.com

W360 MULTIFUNCTION TABBER SYSTEM: The W360 Multifunction Tabber System has some of the most advanced features for a tabletop model and it has the capability to meet all the latest USPS regula-



Pitney Bowes W360 Tabber System

tions in order to benefit from automated postal discounts. The dual head tabber provides several tabbing applications along with a stamp affixing all in one simple step. It's great for tabbing newsletters, double postcards, letter size booklets, tri-fold brochures and other open ended self-mailers. This system can apply up to 3 USPS postage stamps on a self-mailer, applies round tabs from 3/4" to 1 1/2" to the top and side of a mail piece simultaneously and on opposite side and handles a variety of paper stocks like coated, newsletter, recycled and card. The digital control panel has the ability to program and save up to four jobs. The system applies clear, translucent and paper tabs, processes media from 5"Wx 3 1/2" L to 11"Wx 15 L", up to 1/4" thick and includes a standard feeder with holds up to 12" of folded material in a single load.

CONTACT: For more information call 877-682-7687 or visit Pitney Bowes at PitneyBowes.com.